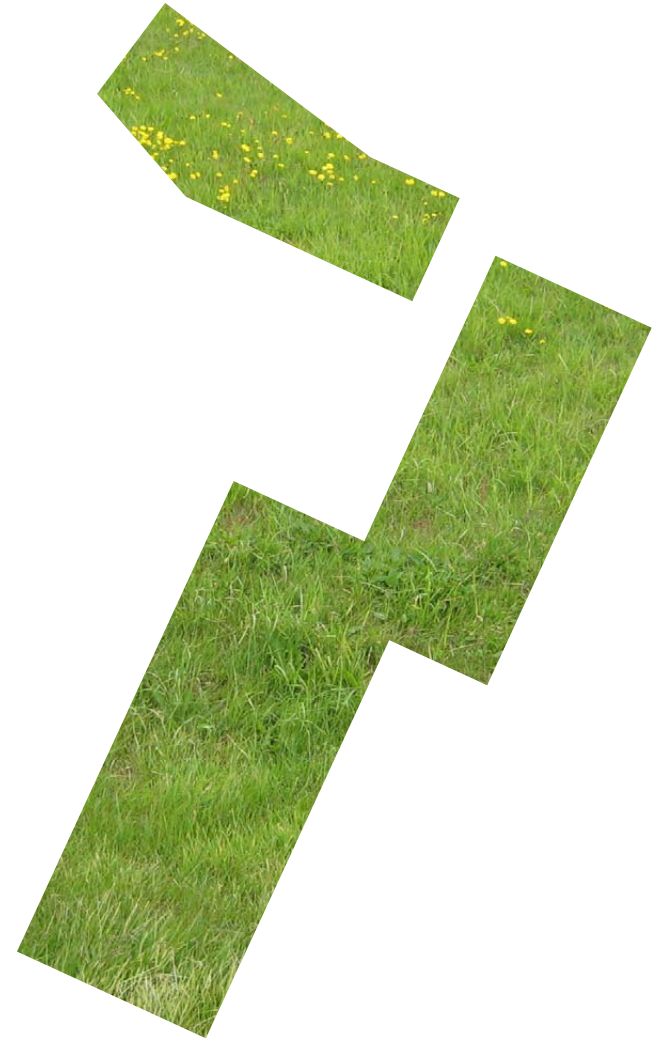


*suðurbakki - sumarhús við sog*





Ásgarðsbreiða

SOG

opið svæði til  
útvistar  
Tórfholt

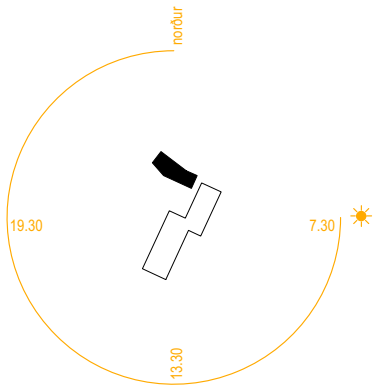
stöðvarhúsið  
Orkuveiturar

opið svæði til  
útvistar

opið svæði til  
útvistar

0 100 m

25.11.2007 GLÁMA·KÍM



#### Suðurbakki sumarhús við Sog

Byggingin samanstendur af tveimur húsum aðalhösi og gestahúsi sem tengjast með skjólpaki og verönd. Húsin eru byggð úr timbri á steyptri plötu.

Aðalhösið er klætt með hvítaðri timburklæðningu en gestahúsið með bikaðri timburklæðningu. Á þakinu er gras.

Gluggar eru álklaðdir timburgluggar hvítaðir að innan en taka lit af klæðningunni að utan.

Gólf eru slípuð steypa, veggir hvítir gipsveggir og loft hvít gipsloft.

#### aðalhús

1. eldhús / borðstofa.....	28.0 m <sup>2</sup>
2. stofa.....	27.0 m <sup>2</sup>
3. anddyri.....	5.8 m <sup>2</sup>
4. herbergi.....	10.2 m <sup>2</sup>
5. baðhergi.....	6.2 m <sup>2</sup>
6. herbergi.....	12.8 m <sup>2</sup>

#### gestahús

7. geymsla og inntök.....	5.5 m <sup>2</sup>
8. baðherbergi.....	2.9 m <sup>2</sup>
9. sauna.....	2.6 m <sup>2</sup>
10. anddyri.....	3.0 m <sup>2</sup>
11. herbergi.....	8.7 m <sup>2</sup>

12. verönd

13. pottur

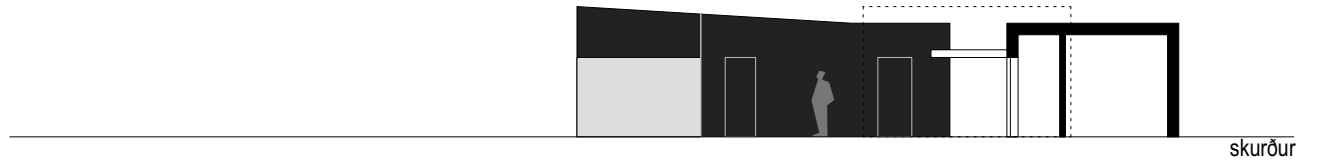
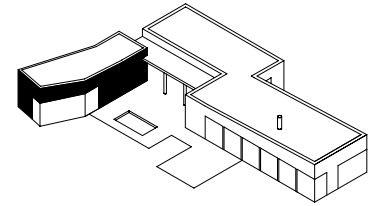
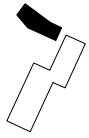
14. undir skyggni

#### brúttó stærðir

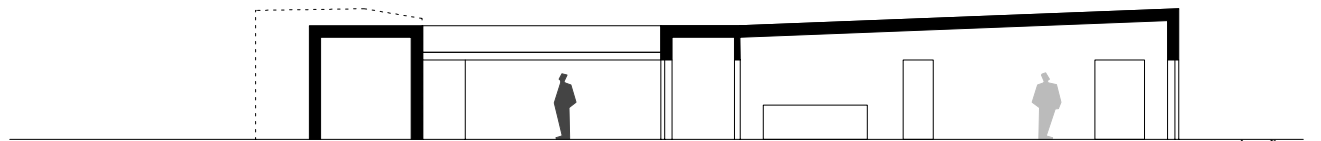
aðalhús.....	119 m <sup>2</sup>
gestahús.....	32 m <sup>2</sup>



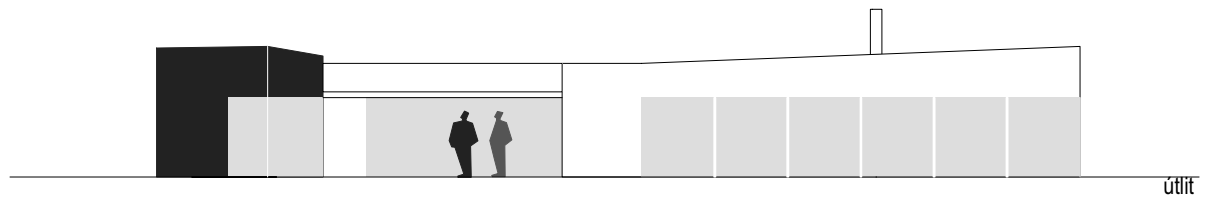
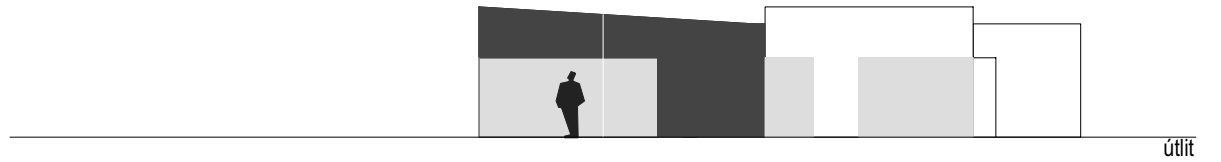
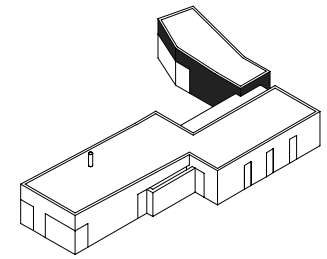
grunnmynd

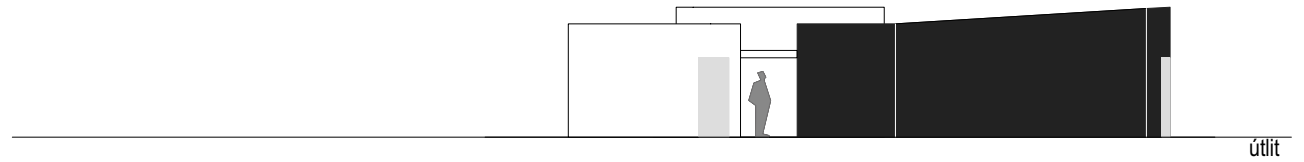
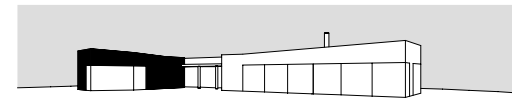


skurður

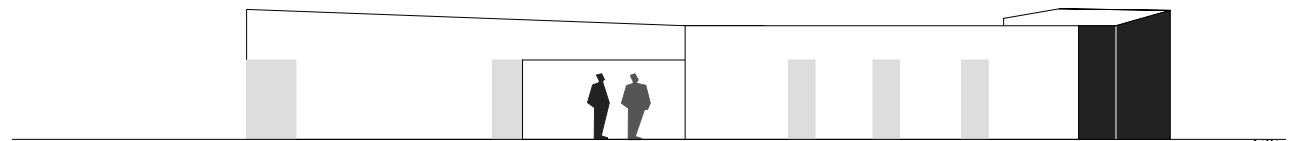


skurður

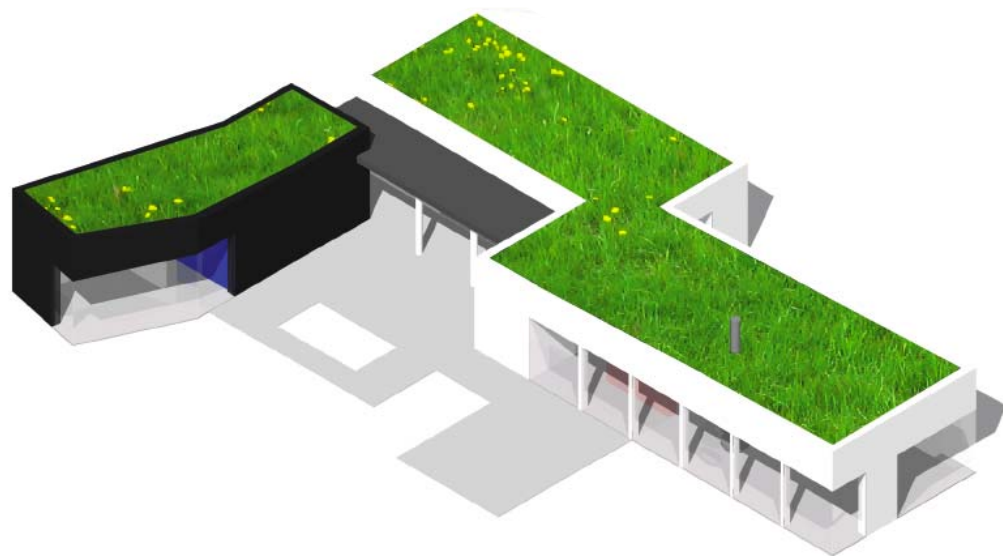
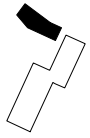


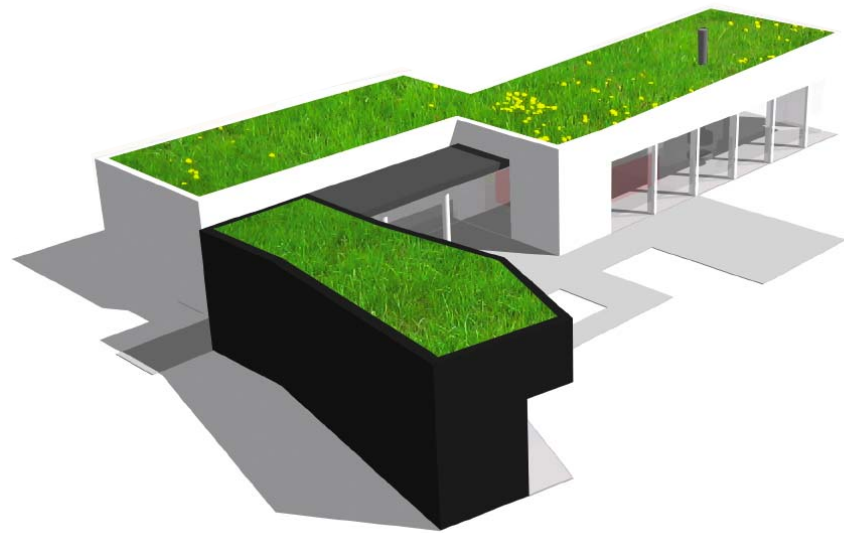
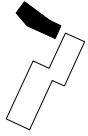


útit

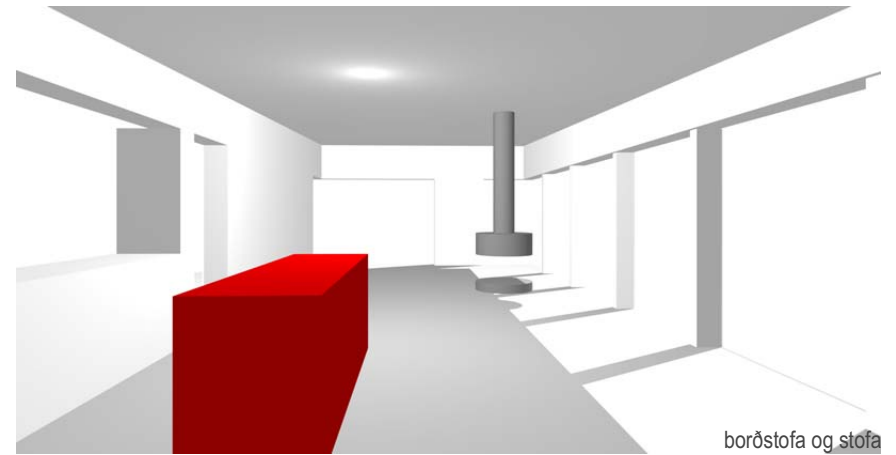
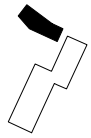


útit





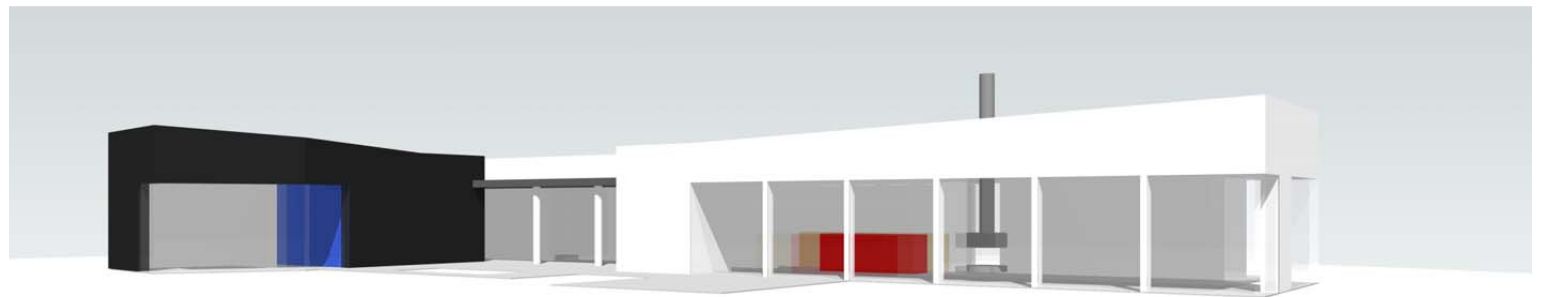
aðkoma



borðstofa og stófa



borðstofa og séð inn herbergjagang



séð að verönd / skjólsvæði